

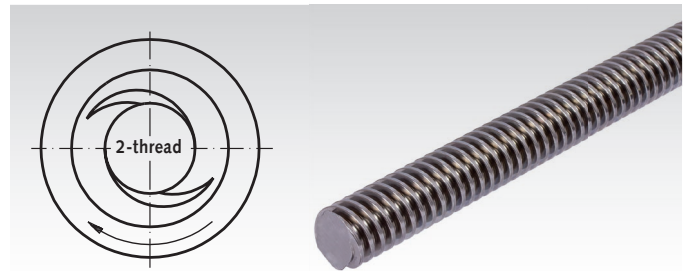
Metric ISO-Trapezoidal-Thread Spindles DIN 103, Double-Thread, Right Hand

Material: C15.
Stainless Steel 1.4305.



Tolerance zone 7 e. Right Hand.

Double-threaded nuts made from plastic, steel and red brass page 453.



Ordering Details: e.g.: Product No. 645 012 00, Threaded Spindle C15, Double-Thread, Right Hand, Tr. 12 x 6 P3 x 1000 mm

Product No. Steel C15	Product No. Stainles St. 1.4305	Trapezoidal Thread Outside Ø x Lead mm	Length mm	Flanks Ø min. mm	Flanks Ø max. mm	Core Ø min. mm	Weight kg
645 012 00	645 990 12	Tr. 12 x 6 P3	1000	10,191	10,415	7,84	0,8
645 112 00	645 991 12		1500				1,2
645 212 00	645 992 12		2000				1,6
645 312 00	645 993 12		3000				2,4
645 016 00	645 990 16	Tr. 16 x 8 P4	1000	13,640	13,905	10,80	1,4
645 116 00	645 991 16		1500				2,1
645 216 00	645 992 16		2000				2,8
645 316 00	645 993 16		3000				4,2
645 020 00	645 990 20	Tr. 20 x 8 P4	1000	17,640	17,905	14,80	2,1
645 120 00	645 991 20		1500				3,15
645 220 00	645 992 20		2000				4,2
645 320 00	645 993 20		3000				6,3
645 024 00	645 990 24	Tr. 24 x 10 P5	1000	21,094	21,394	17,50	2,9
645 124 00	645 991 24		1500				4,35
645 224 00	645 992 24		2000				5,8
645 324 00	645 993 24		3000				8,7
645 030 00	645 990 30	Tr. 30 x 12 P6	1000	26,547	26,882	21,90	4,7
645 130 00	645 991 30		1500				7,05
645 230 00	645 992 30		2000				9,4
645 330 00	645 993 30		3000				14,1
645 040 00	645 990 40	Tr. 40 x 14 P7	1000	36,020	36,375	30,50	9,4
645 140 00	645 991 40		1500				14,1
645 240 00	645 992 40		2000				18,8
645 340 00	645 993 40		3000				28,2

Rolled Spindles

High grade raw material and complex machine and tool technology lead to our excellent quality in production of threaded spindles.

The strong densification causes frictional heat which has to be dissipated using a re-cooling or filtering system. If the compressed oil is changed continuously, press-polished flanks without any leaf-shaped marks can be achieved.

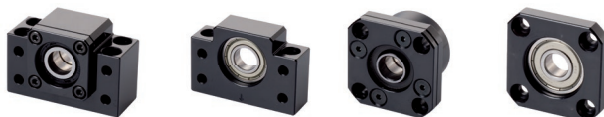
To master the rolling process, in order to achieve exact leads and profiles up to ± 0.03 mm/300 mm (standard $\pm 0.15/300$, material 1.4305 $\pm 0.3/300$) and high surface quality, has only become possible by means of complex measuring and controlling systems in combination with a new generation of machines with swiveling toolholders.

Straightness:

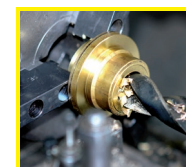
Trapezoid 10 - 24 mm max. 0.8 mm/m,
Trapezoid 28 - 70 mm max. 1.2 mm/m

Straightness on request:

Up to size Tr. 16: 0.10 mm/m.
From size Tr. 20: 0.05 mm/m.



Bearing Units for Spindels page 414



Reworking within
24h-service possible.
Custom made parts
on request.